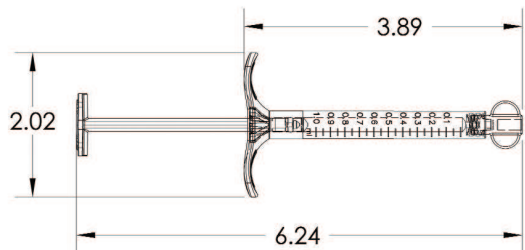




Customized Pre-Fillable Syringes Vials and Components

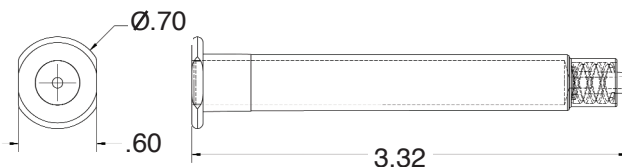


NEW! **SmarTUB™**
by Plas-Tech Engineering



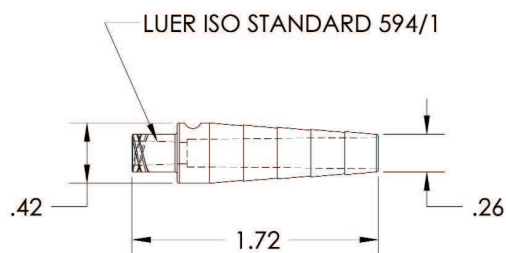
**0.5ml, 1.0ml, 1.5ml, 3ml & 10ml Long Syringe
(1ml pictured)**

Material: COC, COP, CBC, PET, PMMA, PC, PP



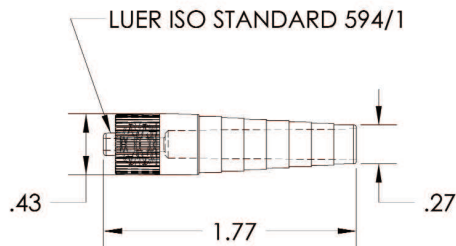
**1ml & 3.0ml ISO Long Pre-filled Syringe
1ml, 2.25ml & 3ml ISO Short Pre-Filled Syringe
(3ml pictured)**

Material: COC, COP, CBC, PET, PMMA, PC, PP



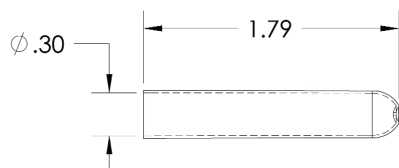
Female Luer Lock, Stepped Connector

Material: ABS, PMMA, PC



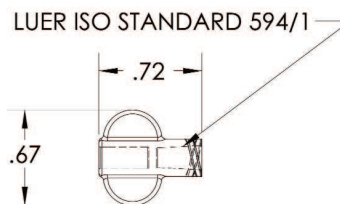
Male Luer Lock, Stepped Connector

Material: ABS, PMMA, PC



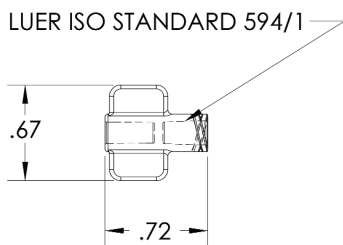
1.75ml Vial

Materials: COC, COP, CBC, ABS, PMMA,
LDPE, PP, PS



Female Luer Cap - Radius Wing

Materials: - COC, COP, CBC, ABS,
PMMA, LDPE, PP, PS



Female Luer Cap - Rectangular Wing

Materials: - COC, COP, CBC, ABS, PMMA,
LDPE, PP, PS

Material Definitions:

*COC- Cyclic Olefin Copolymer (aka Topas)

*COP- Cyclo Olefin Polymer (aka Zeon)

*CBC- Cyclic Block Copolymer (aka Vivion)

PP- Polypropylene

PE- Polyethylene

PMMA- Polymethyl methacrylate (aka Acrylic)

LDPE- Low Density Polyethylene

PS- Polystyrene

ABS- Acrylonitrile Butadiene Styrene

PC - Polycarbonate (Lexan-Makrolon)

PET-Polyethylene Terephthalate (aka Polyester)

All materials conform to ISO 10993/USP 6 requirements

Other materials available upon request

Fluoropolymer coatings available upon request

Manufactured for Equinox Medical by:



plas-tech engineering

EXCELLENCE IN MEDICAL MANUFACTURING

875 Geneva Pkwy N., Lake Geneva, Wisconsin 53147

Tel. 262-248-2379

www.plastechengineering.com

Fax. 262-248-2289