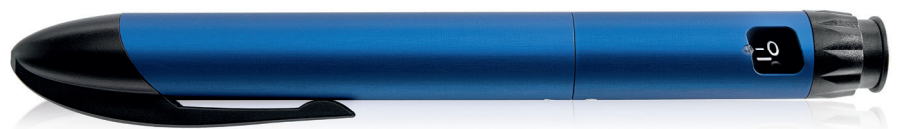




Working together to inspire your patients



i-pen at a glance

	 i-pen	 i-pen [®]	 Axis-D	 Penlet	 Softpen
					
 Manual injection	●	●	●		
 Auto injection				●	●
 Reusable	●	●			●
 Disposable			●	●	
 Hidden needle				●	●
 Multiple injections	●	●	●	●	●
 Variable dosage	●	●	●		●
 Fixed dosage				●	

i-pen System

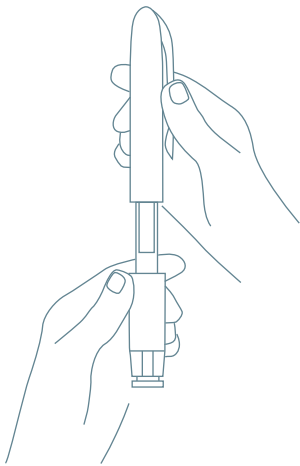
The i-pen is a reusable, variable dose injection device designed for use with a standard 3 ml cartridge. It features an attractive design and variability for customization and choice of color. Designed from extensive research and patient testing, the i-pen is designed to meet the needs of self injecting patients. Available as a standard Haselmeier design or customized to your specific requirements.



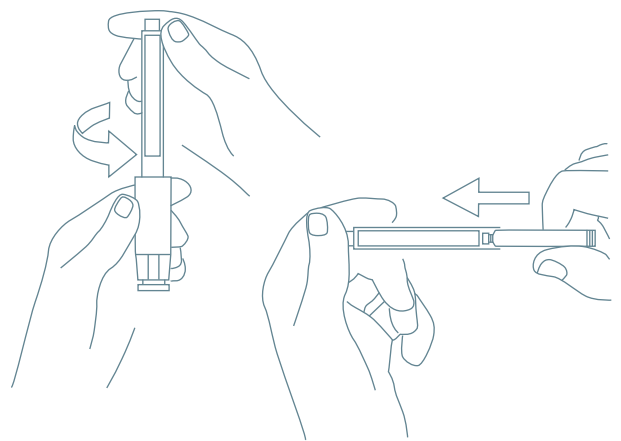
The i-pen incorporates the following features:

- | | |
|---|---|
| ✓ Compact size for easy handling and portability | ✓ Dose correction to avoid injection errors and loss of product |
| ✓ Anodized aluminium body to provide years of reliability | ✓ Manual insertion and injection |
| ✓ Multiple injections | ✓ Dose increments from 0.01 ml to 0.6 ml |
| ✓ Large and easy-to-read dose indicator | |

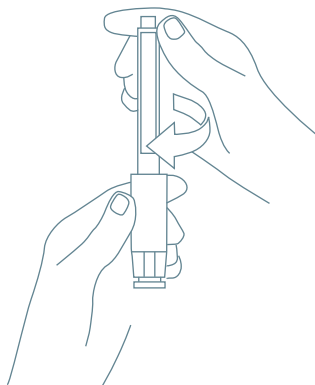
Instructions for the use of i-pen



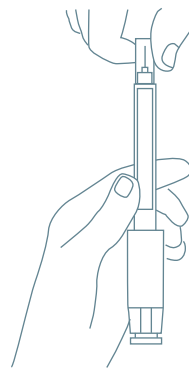
1 / Remove pen cap



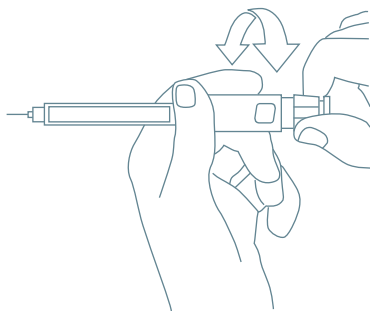
2 / Unscrew the cartridge holder
and insert the cartridge



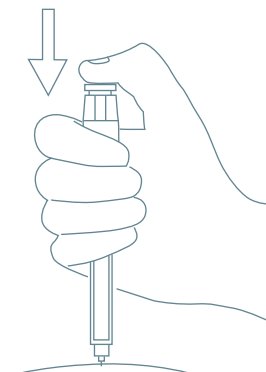
3 / Attach the cartridge holder



4 / Remove the paper tab and
attach the needle to the pen



5 / Set dose



6 / Insert needle and deliver dose



Applications

BerliPen®

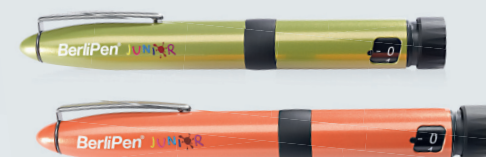
BerliPen® areo 2



BerliPen® Precision



BerliPen® Junior



Pen Features



Developed exclusively for Berlin-Chemie



Diabetes treatment



For injection of insulin



Available in Germany



Applications

TactiPen® / iTango®



Pen Features



Developed exclusively for Sanofi



Diabetes treatment



For injection of insulin



Available in selected countries in Europe and Japan



Applications

JuniorSTAR®



The JuniorSTAR® has been honored by the Chicago Athenaeum, Museum of Architecture and Design, with the Good Design Award for its new and fully developed technology.
As awarded by The Chicago Athenaeum: Museum of Architecture and Design.



Pen Features



Developed exclusively for Sanofi



Diabetes treatment



Half-unit insulin pen



Available in selected countries in Europe

Applications

INSUPen®



Pen Features



Developed exclusively for Biocon



Diabetes treatment



For injection of insulin



Available in India



Applications

Growtropin® Pen



Pen Features



Developed exclusively for Dong-A



Growth hormone deficiencies treatment



For injection of human growth hormone –
recombinant somatropin



Available in South Korea

Applications

Ferring Pen



Pen Features



Developed exclusively for Ferring



Growth hormone deficiencies treatment



For injection of human growth hormone –
recombinant somatropin



Applications

Q-Cliq™ Pen



Pen Features



Developed exclusively for Shire



Multiple concentrations
→ 25,50,75,100 mcg per dose



Hypoparathyroidism treatment



Available in North America



User Focus

At Haselmeier our mission is to create products enabling a convenient and comfortable experience. This is why patient feedback is integrated early in our device design.



Bridge to Market

At Haselmeier we provide integrated design, development and industrialization services to help you bridge your serial product into the market.



Manufacturing & LifeCycle Partner

Regardless of your requirements, Haselmeier applies the highest quality standard for manufacturing your drug delivery device to ensure a reliable and reproducible manufacturing and quality process.